

ULTRA THIN NATURAL MARBLE

THERE IS A LOVE CALLED LEADING EXPLORING AND THINKING

Royal Luxe Marble

ULTRA THIN NATURAL MARBLE BRAND ALBUM

Ultra-Thin Natural Marble

Ultrathin stone slabs revolutionize the traditional perception of marble, evolving from a "light" definition towards a "thin" development, endowing marble with a more diverse and dazzling vitality. We firmly believe that only through focus can we create products that withstand the test of time.

- Beautiful aspirations •
- Gathering the essence of nature •
- Embracing the principle of non-action in nature •

BRAND STORY

- Craftsmanship refinement
- Originality in the trade
- Creation of objects, flow of forms

Thinning the matter of light years, from stone to stone material, humans have gone through millions, from 3 millimeters to 0.5 millimeters, from small specifications to large panels, after seven years, with China's intelligent manufacturing as the carrier, and with the expansion of the application surface of natural stone as its mission. Adhering to the craftsmanship spirit, through a hundred thousand hammerings, forging ahead, ultimately making the stone as thin as a cicada's wing, dancing lightly, truly natural, originating from nature, stone~ the Earth mother's nurturing for millions of years, can be called precious stone. Ultra-thin natural precious stone, with the quality of diamonds, with the weight of carats, flexible, light, going global, going to you~ Italy, Spain, Dubai, Abu Dhabi, Greece Germany, Turkey, the Netherlands, the United States. Applied to~ Apple phone cases, car interiors, refrigerators, air conditioner decorative surfaces, furniture decorative surfaces, door body decorative surfaces, ceiling, arc spiral staircase, columns, kitchen cabinet panels, elevators, artistic background walls seamless full decoration, walls, floors, old houses new renovation..... Ultra-thin natural precious stone, can be bent, can be shaped, the beauty of nature, relentlessly pursued, ultra-thin precious stone nurturing light years, integrated into life. With ultra-thin, ultra-light, green energy-saving, empowering products, adding value to brands, five carats sincere, trustworthy, precise, perfect, continuing the stone age; thin stone material, thick world.

ENTERPRISE VISION

Continuously creating professional value

Ultra-thin (Technology) Stone Industry Development Co., Ltd. adheres to the principle of "integrity, trust, precision, and perfection", and has established a good reputation and reputation in the domestic and international stone industry. In the fierce competition, it has further grown and expanded, undertaking and completing hundreds of key projects such as the Huaxia Bank in Pudong, Shanghai, the Xiangmei Garden in Pudong, Shanghai, the China Fiscal Museum at the Meilun Grand Hotel, the Office Building of Beijing Guodian Group, the Zhonglian Building in Beijing, and the Qianxin Greenland in Hangzhou. The continuity and stability of product quality have been highly praised by customers. In addition, our company is not content with the existing product lines and continues to develop and innovate within this product field. At the beginning of 2019, the Ultra-thin Stone Home Application Gallery was established at the headquarters in Fujian, and the same year, a designer material selection center was set up in Dongguan, Guangdong, to more comprehensively cover the international market with ultra-thin stone materials.

- Luxurious and preciousness ▪
- The pen is extremely gorgeous ▪
- It turns out to plain ▪

Material innovation

The birth of ultra-thin natural marble

It offers more diverse possibilities for home aesthetic design

What is ultra-thin stone ?

A new material product that retains the texture and grain of natural stone has not only been frequently used in many domestic and international cases in recent years ,but has also made a prominent appearance at major design industry exhibitions. Products of this kind are collectively referred to as "ultra-thin stone."



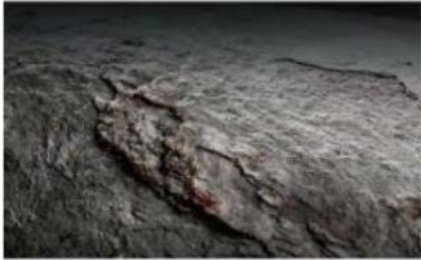
ULTRA THIN NATURAL MARBLE

Bendable 0.5 mm – 5mm

New Materials | New Concepts | New Choices

Ultra-thin stone core characteristics

CORE	CHARACTERISTIC
------	----------------



Natural

The texture and color of the raw stone

Not copyable



Light and thin

Convenient transportation, easy installation

Significantly reduce overall cost



Strong and flexible

Installation and transportation without damage

Satisfy the surface modeling decoration requirements



Light transmission

Endow stone with temperature

Let the light possess texture

Natural Thin Stone Application Plate

THIN
STONE
APPLICATION PLATE

Decoration | Home
Furnishing | Cultural and
Creative Industry

One Arc To The End

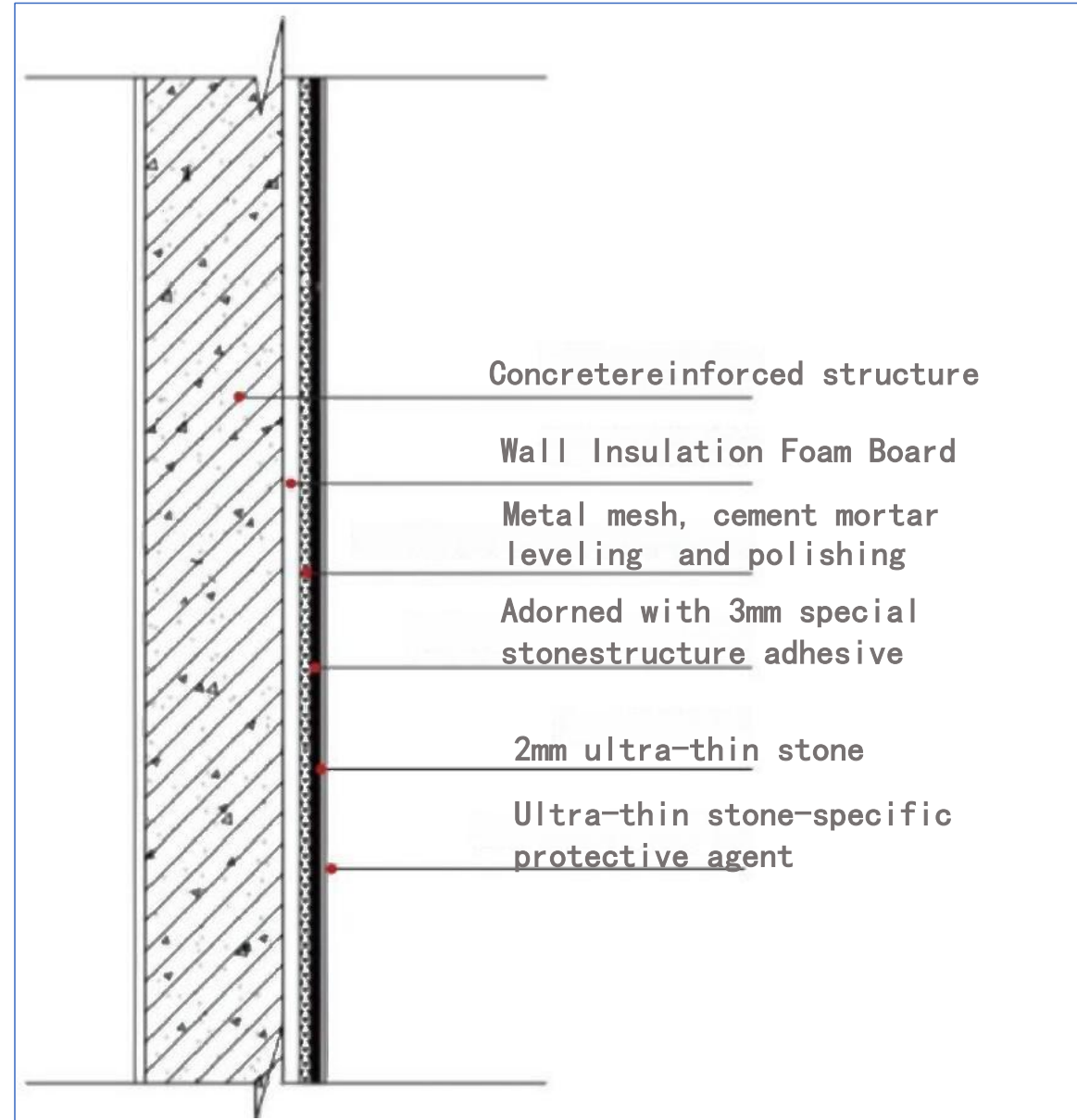
“Decoration”

FOR YOUR SATISFACTION — KEEP VOWING NOT TO STOP

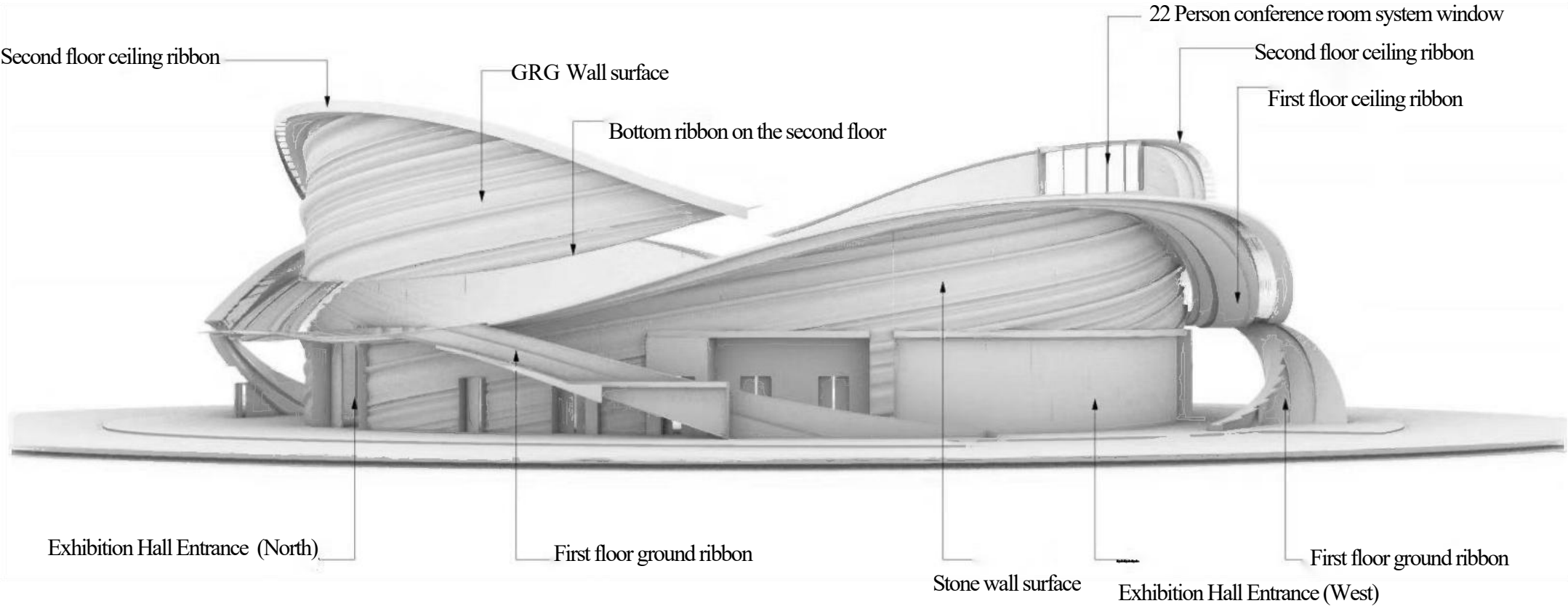
1mm(1600 mm*3200mm)2.8kg/m² 3mm(2000mm*3200mm)7.5kg/m² 5mm(2000mm*3200mm)12kg/m²

Ultra-thin stone exterior wall construction node diagram

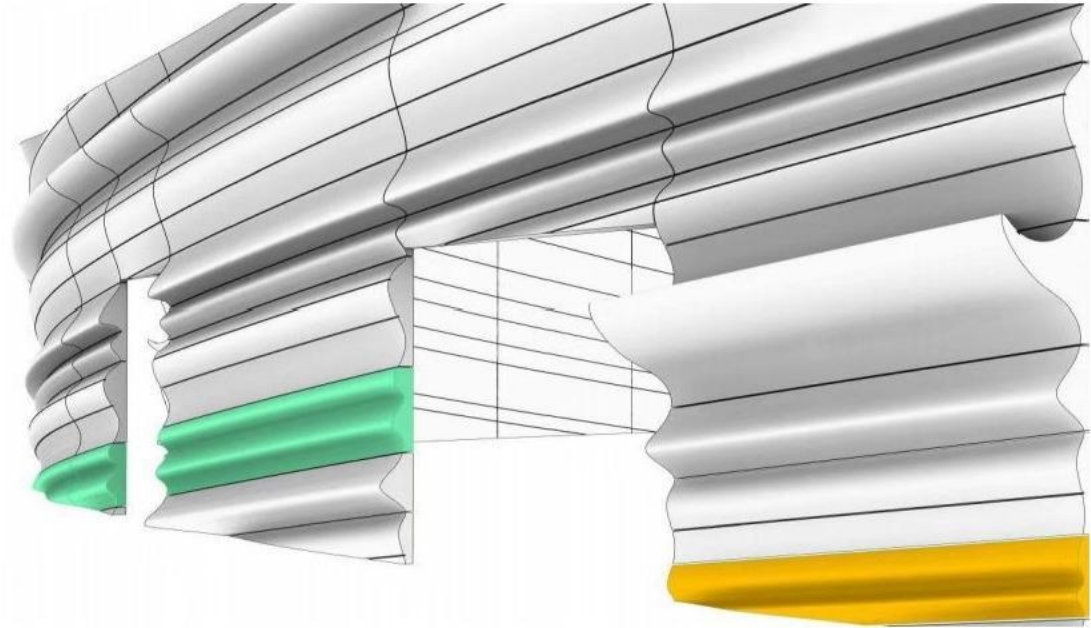
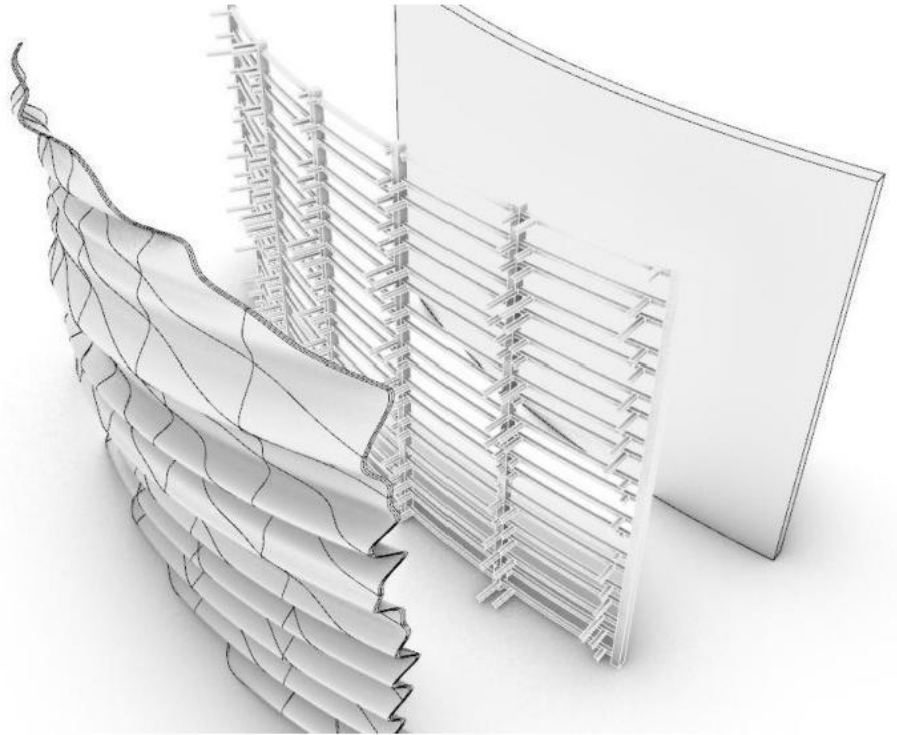
OUTDOOR WALL NODE DIAGRAM



Case Analysis Shanghai Xuhui Project



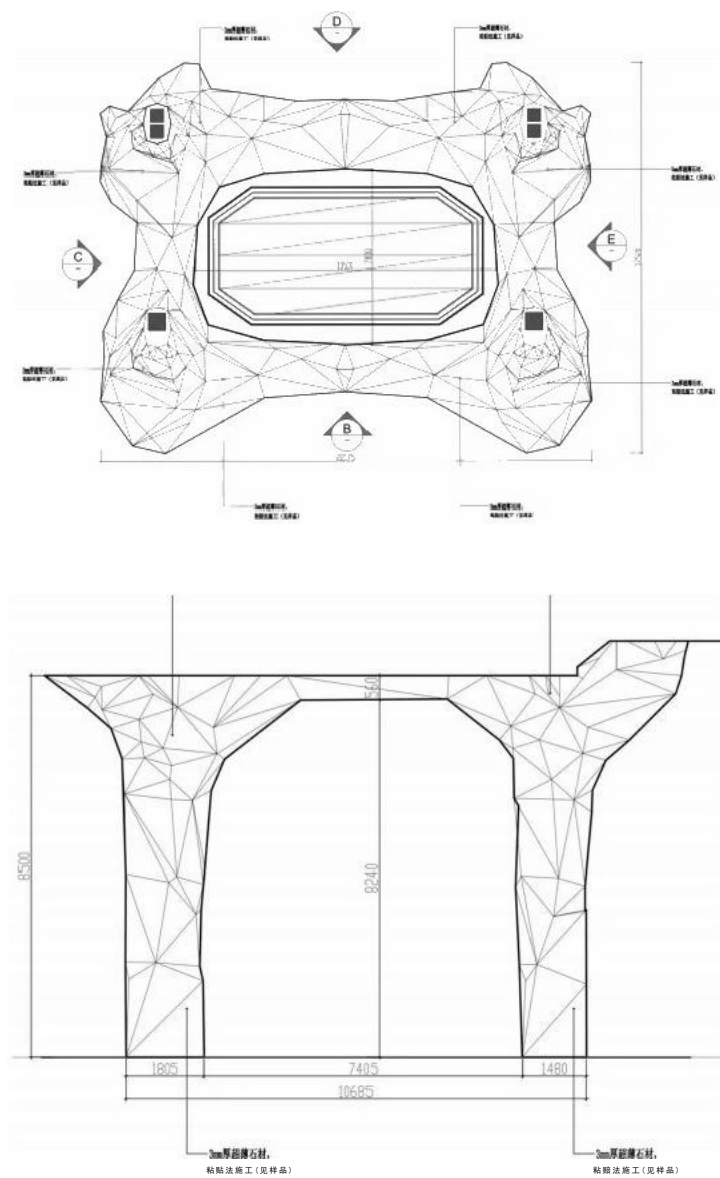
Case Analysis Shanghai Xuhui Project



Case Analysis Shanghai Xuhui Project

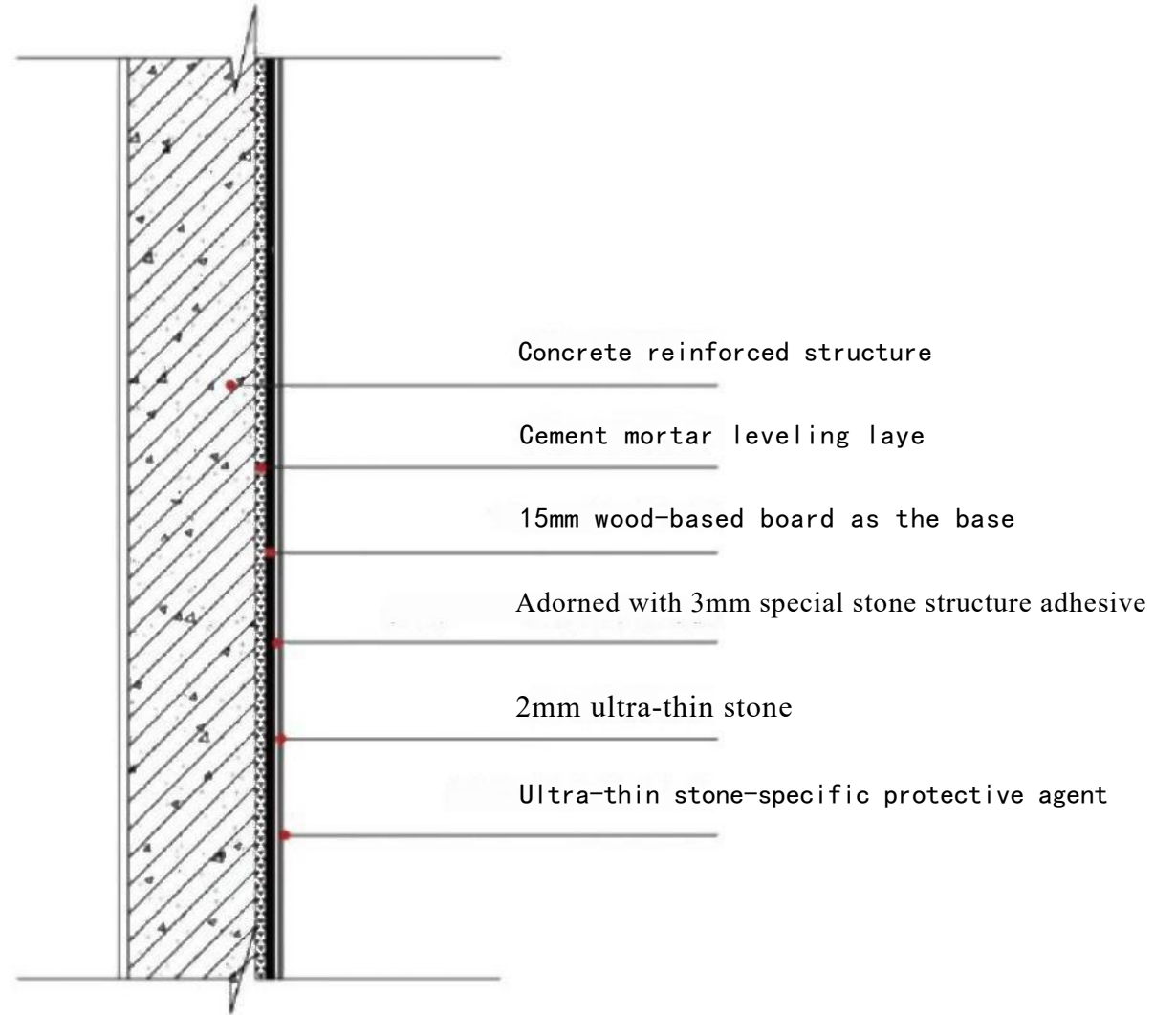


Case Analysis Taizhou Swan Lake Hotel



Ultra-thin stone interior wall construction node diagram

INDOOR WALL NODE DIAGRAM



Case Analysis Taizhou Swan Lake Hotel



Case Analysis Taizhou Swan Lake Hotel



TRADITIONAL MARBLE vs ULTRA THIN MARBLE

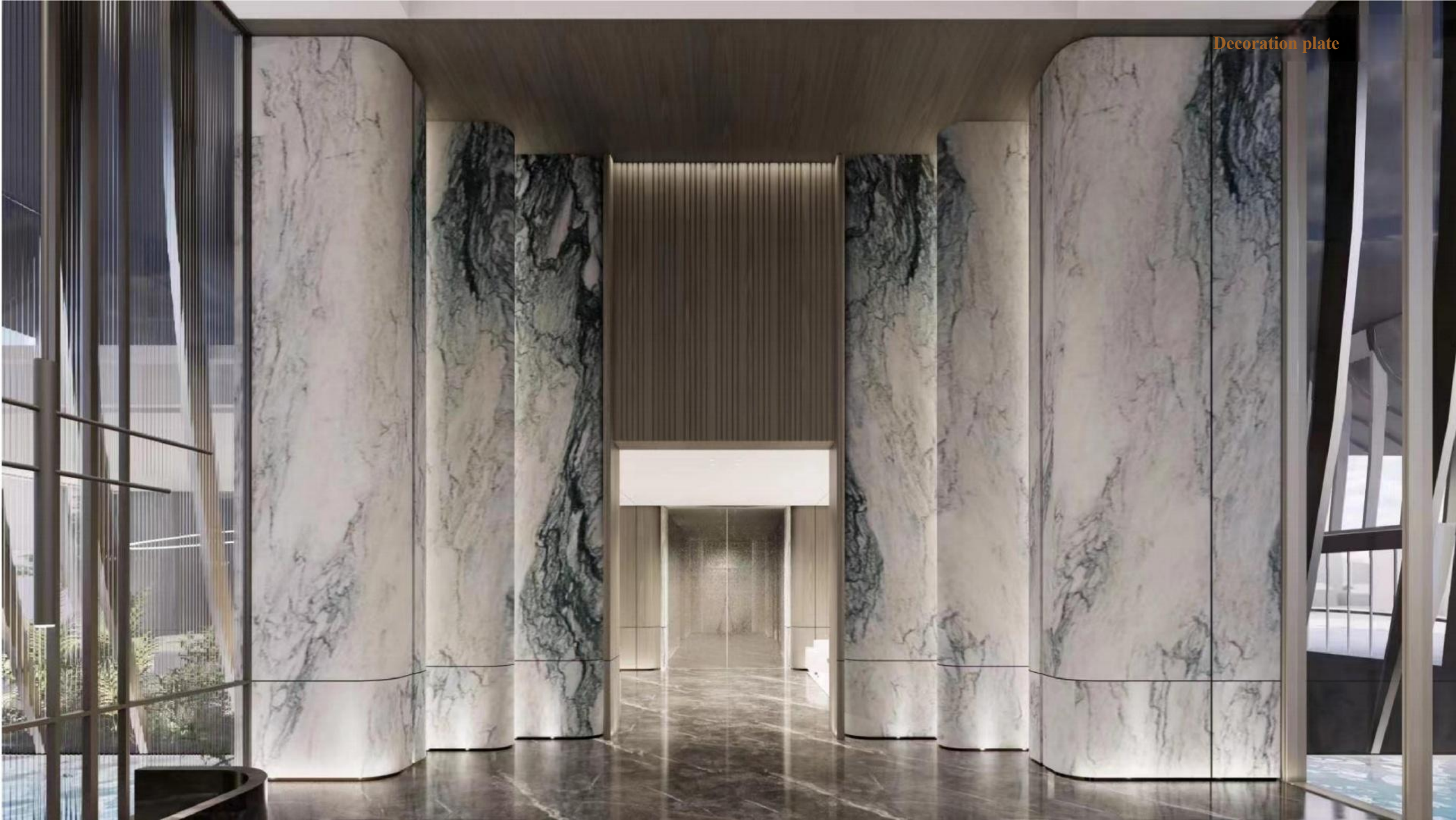
(Cost Analysis)

Number	Material Name	Unit	18mm large panel	18mm Finished product price	Ultra-thin finished stone products (2-5mm)	Ultra-thin finished stone product (1mm)	Price difference ratio %
1	Marble White	m ²	1200	¥2060	1695	1995	10.00%
2	Fendi White	m ²	2800	¥4660	3695	3995	17.00%
3	Fish belly white	m ²	8800	¥14600	9995	10295	30.00%
4	Amazon Green	m ²	12000	¥19900	13595	13895	32.00%









Decoration plate

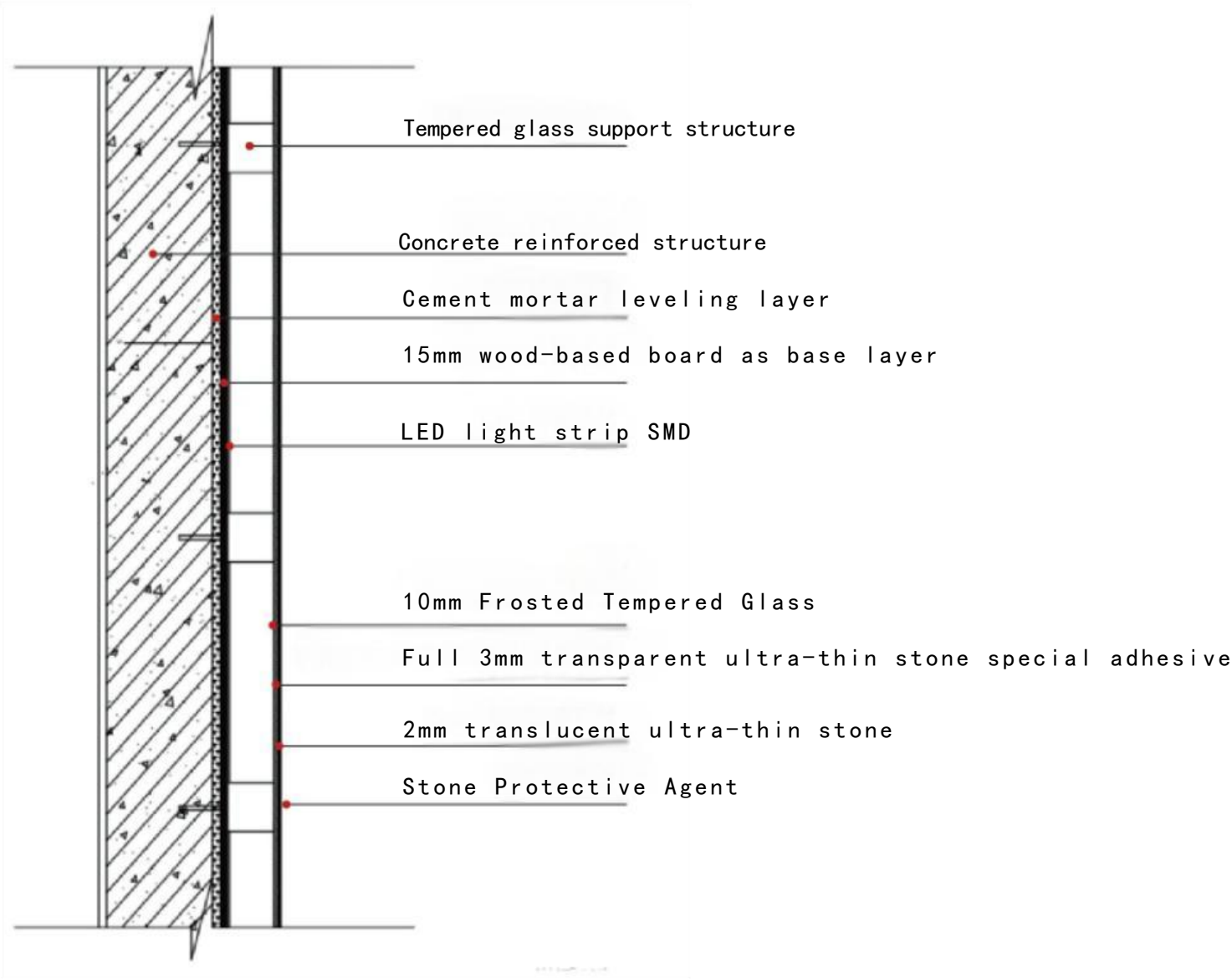






Ultra-thin stone light-transmitting wall construction node diagram

PHOTIC WALL NODE DIAGRAM



Case Analysis Macau Apple Flagship Store



“Home Furnishing”

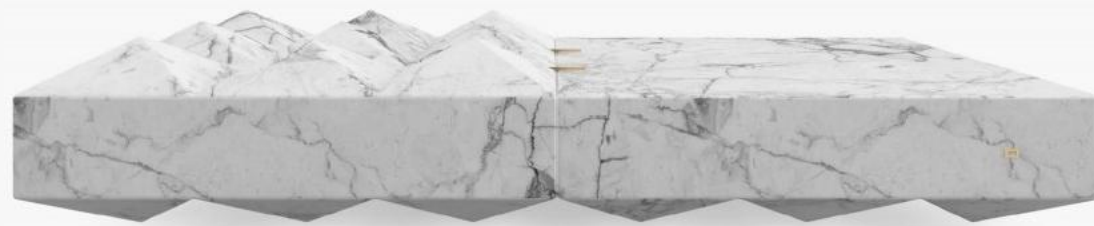
CLASSIC AND UNIQUE – LEAN COLLECTION

1mm(1600mm*3200mm)2.8kg/m² 3mm(2000mm*3200mm)7.5kg/m² 5mm(2000mm*3200mm)12kg/m

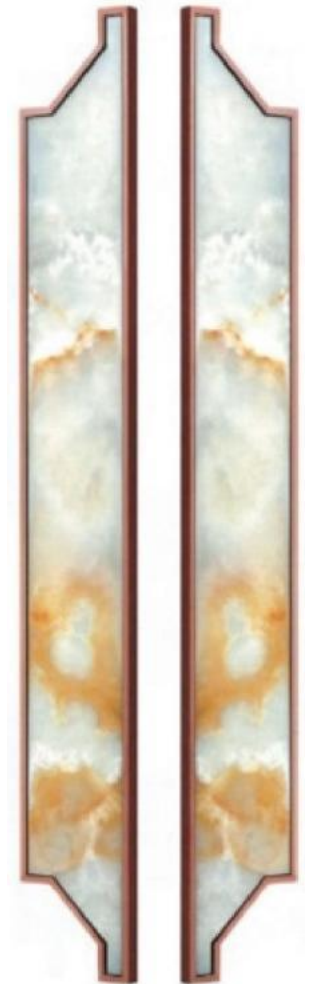




Home furnishing sector







ROMANTIC



Chunlu Cabinet

1mm-5mm Natural Marble

FRESHEN

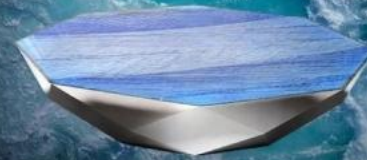
新鲜空气



Mesa Glass Table

1mm-5mm Natural Marble

PERSONALITY



Darius Coffee Table

1mm-5mm Natural Marble

PERSONALITY



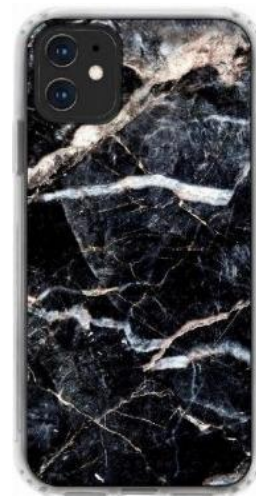
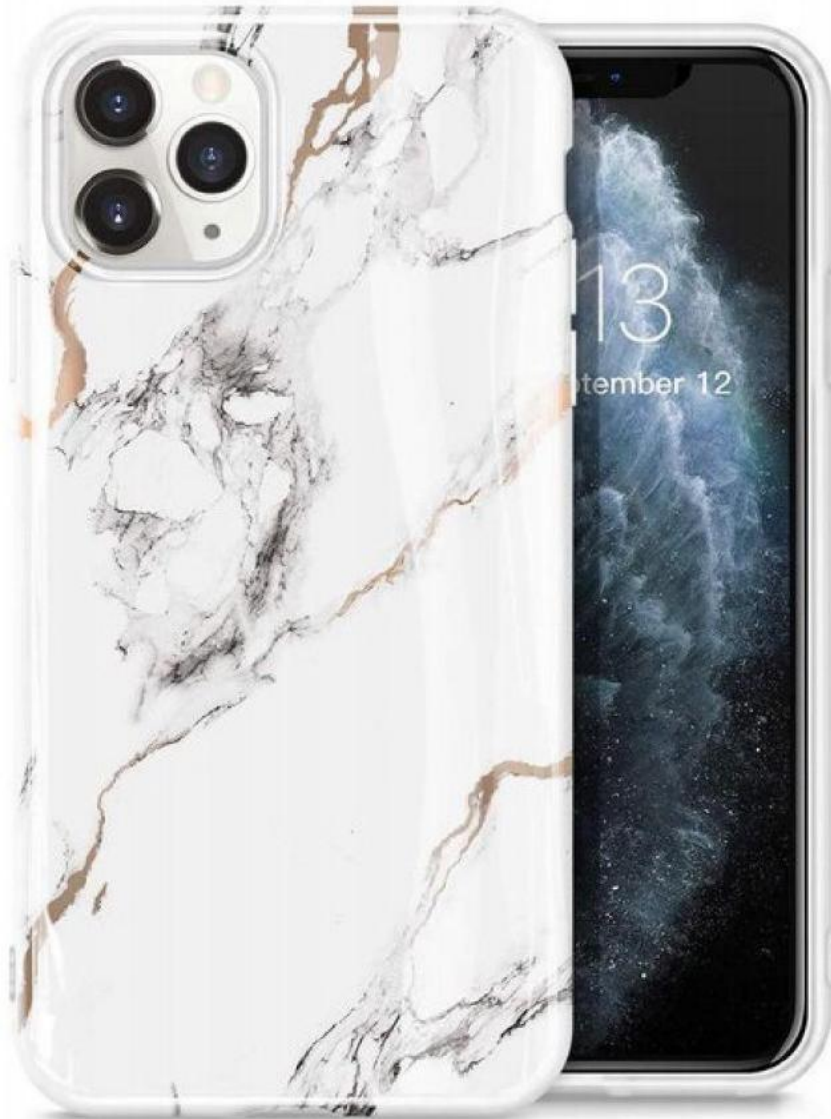
Grayson Coffee Table

1mm-5mm Natural Marble

“Cultural and Creative Industry”

RECRUITING NEW TALENTS – MELTING INTO REFINED CRAFTSMAN

1mm(1600 mm*3200mm)2.8kg/m² 3mm(2000mm*3200mm)7.5kg/m² 5mm(2000mm*3200mm)12kg/m²









CONSTRUCTION PROCESS DESCRIPTION

Ultra thin marble can easily be used for both planar and curved modeling

The specific key points are as follows:

(I) Construction Conditions

1. Whether the work surface is flat can be observed with the naked eye or with a level ruler;
2. The work surface must be secure to ensure the durability of the material being applied;
3. The work surface must be clean to enhance the adhesion strength and durability;
4. The construction temperature should generally reach above 10 degrees Celsius, and if the board is too hard, warm air heating can be used to make it more pliable.

(II) Construction Preparation

1. Construction tools. Including circular saw cutters (or carpet knives, woodworking electric saws), adhesives, serrated scrapers, planing knives, tape measures, packaging tape, sandpaper (600 grit), etc.
2. Protective tools. When cutting and grinding ultra-thin marble, preventive measures must be taken. It is recommended to always use appropriate gloves, goggles (or safety glasses), and dust masks.

(III) Construction Step One

Ultra-thin stone construction is relatively simple, as long as the base is level, the back is coated with structural adhesive, and then it can be fixed in place. The construction process is as follows: measuring → cutting → trimming → applying adhesive → construction → adjusting → completion. Due to the different materials used for the base, the key points that need attention vary:

1. Wooden base material. Use universal adhesive, apply glue to both the product back and the wooden base material, and wait for the glue to dry and not stick to the hand before bonding. After bonding, use wooden blocks and a hammer to knock out the air.
2. Cement walls. Use structural adhesive, apply glue to both the product back and the cement wall, especially around the edges of the product back.
3. Glass or acrylic base material. Use crystal glue to apply evenly.


(III) Construction Step Two

4. Create an arc or cylinder. First, prepare the wooden base material, then adhere it with universal adhesive, and subsequently reinforce the corners with brads.
5. Leave a groove joint, apply glue, and use a metal strip for the groove. Generally, protective strips need to be preapplied around the edges of each ultra-thin marble slab to facilitate the grouting process between the ultra-thin stones. After the groove treatment is completed, the product is then adhered to prevent glue overflow onto the product. Finally, the interface is compacted and fixed again, and the construction is considered complete.
6. Application of surface varnish. After the product is adhered, use a brush or sponge to evenly apply the varnish on the product surface. The varnish is milky white before drying and becomes transparent once dry. Since the color of the product after varnishing will be deeper than before, it is recommended to do a small area test first to confirm the desired effect before proceeding with large-scale application.

BRAND COOPERATION

 Company: www.royalluxemarble.com

 Telephone: +8613917882388

 Email: CC@rlmarble.com

HX@rlmarble.com

contact us